



Award winning

Respectful



Innovation

Belonging

Passion

Opportunities





more th

“The only way to do great work  
is to love what you do.”

At Park we will be at your child's side  
every step of the way,  
guiding them as their character develops  
and as they make their own discoveries  
about what they love.

an





more th



# Dear Parent

Our ambition for your child is that the school guides them to find the things they will grow to love in life. We are proud to be a school where everyone belongs, is challenged and supported to be their best, and encouraged to embrace all opportunities our school offers.

We have a wonderful theatre, lecture hall, restaurant and activities on our playing field. Our restaurant serves affordable and delicious school meals prepared by our National award winning chefs and catering team. The classrooms include the latest large touch-screen technology. Students are cared for through our three houses.

Our school, which is set in a stunning park environment, inspires learning and encourages aspiration, helping our young people discover what they love. We have themed the areas of the school around parks of the world. As well as outdoor activity equipment, we have animals, and opportunities that other schools can only envy. Enjoy our prospectus which we hope will give you a good idea of our vision, values, facilities, and the curriculum that your child will learn through at Park Community School.

Christopher Anders  
Headteacher

Ella Capaldi  
Head of School

an

# much **more** than just a **school**





# Welcome



**Main Entrance**



**Car Park**





more than

# Curriculum

Our curriculum makes us different to other schools and ensures that children are well prepared for life after secondary school. We believe students need a range of experiences outside the classroom as well as excellent teaching inside; through a truly broad curriculum, including: enterprise experience in our industrial unit, horticulture on our small holding and construction in our skills centre, children will discover what they love to do. Most qualifications studied are GCSEs with alternative qualifications used where these best suit the young people. In order to prepare for GCSEs we use a variety of learning approaches to build knowledge, understanding and skills.



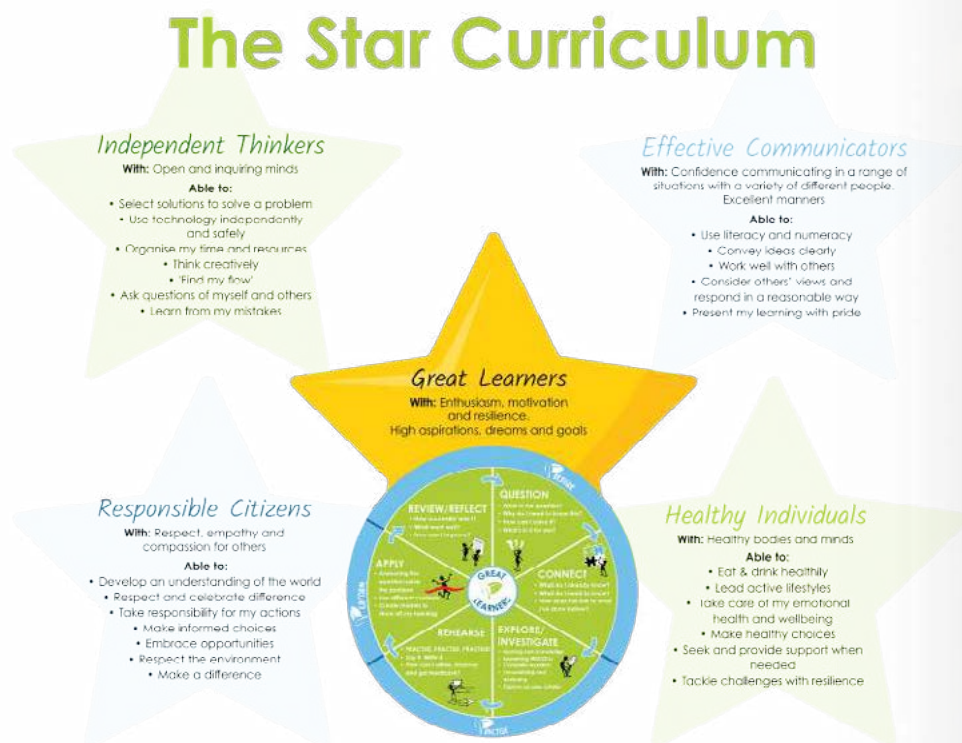
## What is the Star Curriculum?

At Park, we want all students to be Great Learners who expect to think hard, engage with learning and find what they love to do. With this in mind, Year 7 students will begin life at Park studying the Star Curriculum. Our innovative approach to Year 7 curriculum design aims to ensure students have a smooth transition to secondary education whilst making excellent progress.

We believe that for students to succeed they need to be:

- Great Learners
- Independent Thinkers
- Effective Communicators
- Responsible Citizens
- Healthy Individuals

The curriculum is designed to develop students' skills in each of these areas as well as being relevant and aspirational, encouraging depth of thinking and providing opportunities for students to apply their learning regularly to a real-life context.



more at





man



more th





man





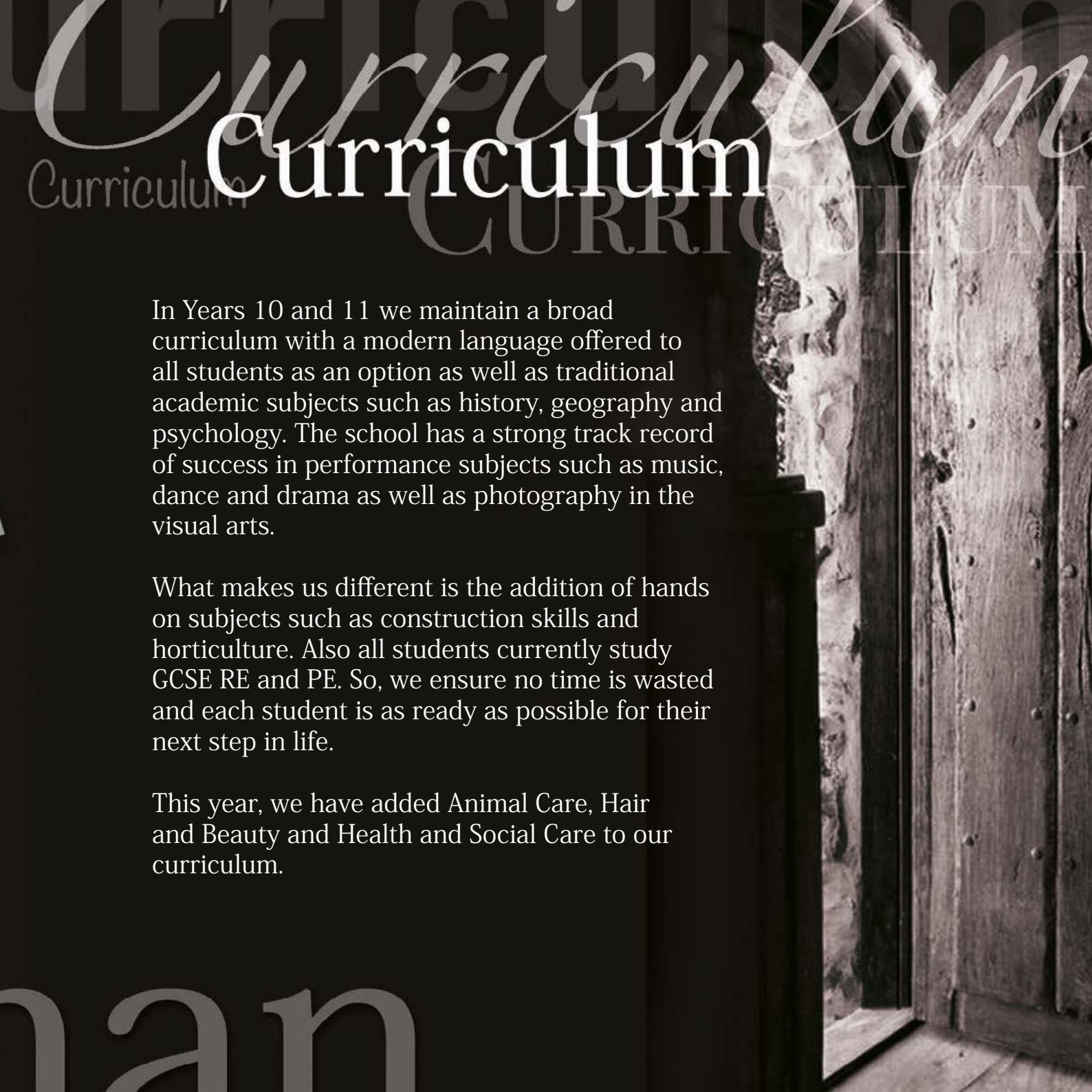
more th

# Curriculum

In Years 10 and 11 we maintain a broad curriculum with a modern language offered to all students as an option as well as traditional academic subjects such as history, geography and psychology. The school has a strong track record of success in performance subjects such as music, dance and drama as well as photography in the visual arts.

What makes us different is the addition of hands on subjects such as construction skills and horticulture. Also all students currently study GCSE RE and PE. So, we ensure no time is wasted and each student is as ready as possible for their next step in life.

This year, we have added Animal Care, Hair and Beauty and Health and Social Care to our curriculum.







more



# English

In English we open doors to real and imagined worlds by equipping our students with the skills and knowledge to become critical readers and creative accurate writers. We explore cultures from around the globe and across time to enhance students' understanding of the world and their place within it.





more th



# Curriculum

As well as learning on the school site we have an industrial unit, a smallholding and a construction skills centre in another part of Leigh Park. Our smallholding is a unique venture set on a local farm. Some students are following horticulture courses and others learning to care for animals. Currently we have chickens and goats on our school site, as well as pigs on our smallholding.

These provide opportunities for children to learn outside the classroom and in school groups where they benefit from new experiences. The facilities are run by Park staff. We also organise many trips to widen horizons and develop understanding of this country and abroad. We explore opportunities for international travel and experiences for all students. As well as opportunities to represent our school in national and local competitions including sports, debating teams, Greenpower cart racing, computer science and performing arts productions.







more th



# Geography

Geography

“Geography is the subject which holds the key to our future”  
Michael Palin

Geography is diverse and is concerned with promoting an understanding of the nature of the Earth's surface and the character of places. It also examines the nature of people's relationships and interactions with their environment.









# History

History

## What is the importance of studying history?

'History is a part of your life and a part of you. It is important to understand how and why things have changed for better or worse to inform us today. Life would be less interesting if we did not know where we came from.' Niamh

'History is important because it marks points in time that have changed life forever. Learning about what happens in the past can shape how you look to the future. History at Park is great because the varied curriculum gives students a sense of identity and allows students to enter the world with the knowledge to make positive changes.' Zack



more



# Creative Curriculum





“Our school is special. We get so many opportunities here and so much support. I am proud to be part of Park, especially the opportunity to get involved in things outside of the curriculum, such as performances in our theatre.” Daisy



more than

## Testimonies

I love English because it is a really creative subject. We read some really exciting texts from a range of genres (my favourite is gothic horror) and experiment with applying their conventions to our own writing. Evie

One of my favourite things about English is that we get to use different types of talk and collaboration to explore our ideas. We have had in-class debates and even got to go outside and use our drama skills to bring alive key scenes from the play we are studying. Our teachers make English exciting and engaging, which is great because it encourages us to be more creative and free with our ideas. Ernie







more than

# Wider Curriculum

Personal development is an important part of learning at Park. Learning about our body, mind, relationships and being a global citizen are taught through Spiritual, Moral, Social and Culture (SMSC) lessons each week. Key areas of relationships and sex education (RSE), careers and citizenship which encompasses Britishness and politics are also covered as well as finances. Equality is a strong theme throughout the programme.

We operate a spiral curriculum where themes and concepts are introduced, then reintroduced at a later time using different contexts as the children mature. SMSC is about creating people who can thrive in the wider world by understanding the world around them.

Students have assemblies as the whole school and in year groups. Assemblies pick up on religious, political, cultural, moral and practical themes. Regular amphitheatre assemblies provide opportunities for students to perform and be part of a good audience. Reading is an important part of tutor times along with a weekly numeracy challenge.

ROMEO AND JULIET.  
PERSONS REPRESENTED  
PETER, Servant  
ABRAHAM, Servant  
An Apothecary  
Three Men  
Chorus  
Page  
An





more









more

# School life

## Extra-curricular clubs

Our focus on enabling students to find what they love underpins our broad range of extra curricular activities and opportunities at Park.

We offer over 40 weekly clubs including groups for poetry, robotics, fitness, geology, and radio. Sporting clubs include football, rugby, bowls and basketball.



## Houses

We have Year Teams and Houses who focus on the pastoral care of our students creating a strong sense of belonging, safety and support from which children are pushed to be their best.

Our Houses allow for internal competition.







more th

# Careers

## Careers

### Careers

Preparing for life after school is important as each year students have time set aside to think and learn about the world of work. We provide two weeks work experience for every child in Year 10 with the Education Business Partnership. They also help us run interview practice days and CV writing.

Through Hampshire Futures (Careers Service) every child has at least one careers interview, a time which is set aside for them to talk to an expert about their ambitions and the best courses and apprenticeships schemes.

Students also hear visiting speakers and meet local business people as well as participating in trips to colleges and universities.



# an





more than

# School life

## Race at Our Place

Our annual Race at Our Place is a now a well established tradition at Park. Together, the whole school community walk, jog or run 2.5 miles through Leigh Park in aid of Cancer Research.

"Most of us know someone who has been touched by cancer and we all have our special reasons for taking part and wanting to help more people survive. Days like this show how the staff and students of Park Community School can pull together to raise awareness and donations for a worthy cause."



Our Race for Life





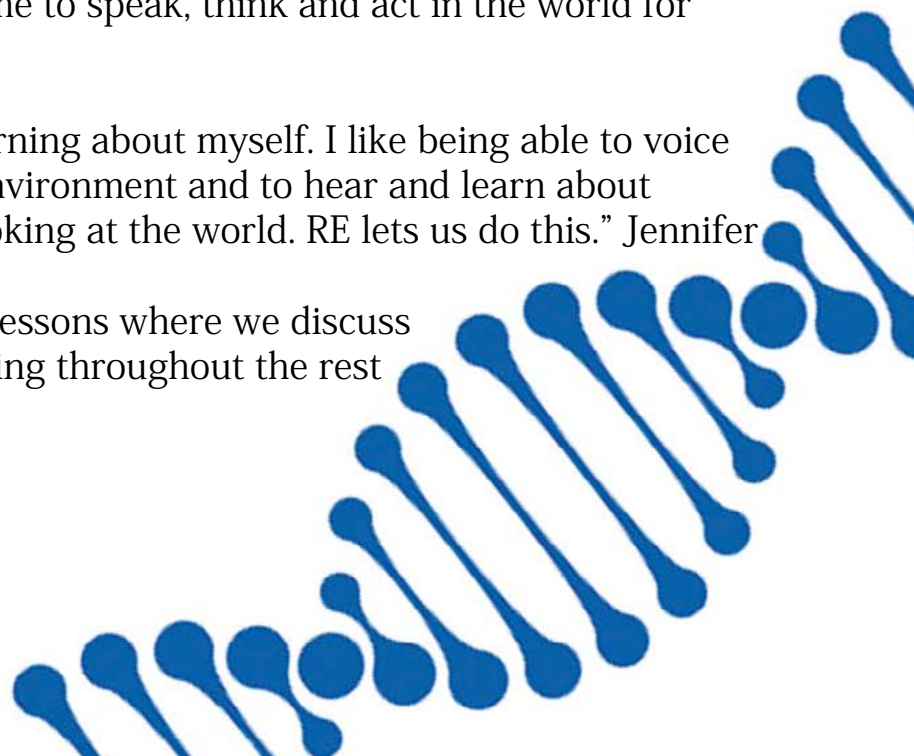
more than

# Education's Religious Education

In RE we offer the chance to explore what it means to be a human being in today's world. RE at Park is about young people first considering their own experience and that of others, engaging intellectually with material that is new and discerning with others what is valuable with regard to living a life. The curriculum challenges students to consider deeply questions, beliefs and issues facing society as they come to speak, think and act in the world for themselves.

"I enjoy thinking deeply and learning about myself. I like being able to voice these opinions in a respectful environment and to hear and learn about others' opinions and ways of looking at the world. RE lets us do this." Jennifer

"I enjoy RE, particularly during lessons where we discuss together and it leaves you thinking throughout the rest of the day" Carly



man





“I love this school”

more than





an





more



- |                             |  |
|-----------------------------|--|
| ● SEN, Fitness Suite, Music | ● Theatres, Restaurant, Discovery Centre |
| ● Sports Hall               | ● Main Teaching                          |
| ● Nursery, Pre-School       | ● English                                |
| ● Dickinson Centre          | ● Technology                             |
|                             | ● Science                                |





more to



School life







more th

A young man in the foreground is playing a red electric guitar and singing. He is wearing a white t-shirt under a denim vest and black fingerless gloves. In the background, a group of young women in white shirts and dark skirts are performing a dance routine on a stage. The scene is lit with purple and blue stage lights.

# Performing Arts

The Performing Arts is an exciting hub of creativity, developing self-disciplined and high achieving performers who are ready to enter the next stages of professional training. Sitting alongside our wide range of formal qualifications we offer extensive opportunities for students to participate in cultural experiences, immersing them in the world of arts.





more than

# Support

## Gifted, Talented and More Able Students

More able students are challenged to achieve high standards through mentoring, inspirational speakers, visits and other opportunities to encourage students to aim high and work hard.

Students will be pushed until they can push themselves.

an





more th

# Testimonies

## Year 11 GCSE Science

“I enjoy all science however I lean towards biology the most because it gives me a practical and visual way of learning. There is always a variety of new and interesting topics to investigate and discover.”

Josh



can





more th

# Support

## Student Support

On some occasions children need more support. We have support and guidance staff attached to each House, as well as medical, counselling and youth specialists. It is very important to us that we do all we can to make sure each child is given every opportunity to enjoy their time at school.



man





more to

# Languages

In MFL we are dedicated to providing opportunities for our students at home and abroad. We not only offer an insight into other cultures but support students understanding of their own language and Britishness. Our aim is to open doors to further study and employment and inspire curiosity and tolerance which will create a future generation of well rounded citizens.







more th

# Support

## School Uniform

We believe school uniform is very important and we expect parents to support the school policy on uniform. We also have high standards when it comes to aspects of appearance like hair style and colour, because we believe this helps students prepare for the world of work.



## Community School

Park Community is proud of its track record of community involvement. Our buildings are used by many groups in the evenings, holidays and at weekends throughout the year. Students love getting involved and raising money for local and national causes through House fundraising activities. Our MUNCH programme provides free school meals in the holidays.



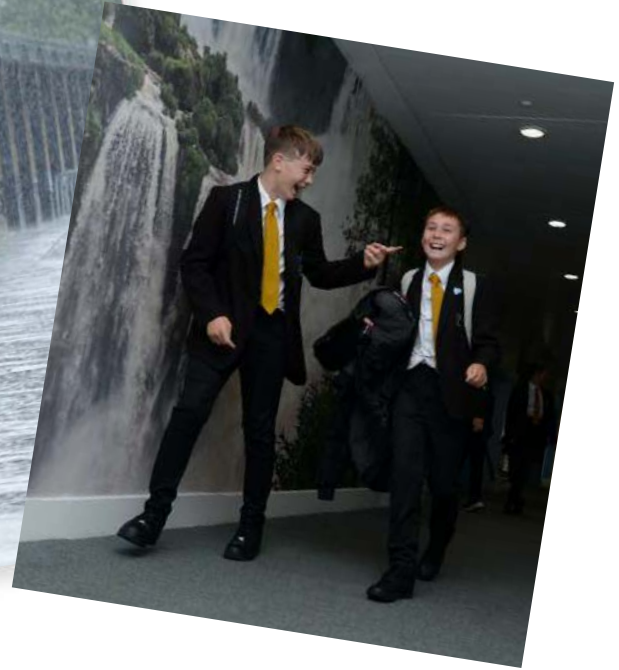
MUNCH™



“Dancing at Park Community School  
provides so many opportunities  
which allow me to explore who I am  
and what I love to do” Jess



# Testimonies



'I think everyone should get a little exposure to computer science because it really forces you to think in a slightly different way, and it is a skill that you can apply in life in general, whether you end up in computer science or not.' Harley





Park Community  
Nursery

more th

# Pre-School

We have a purpose-built pre-school and nursery on site. Please contact the nursery direct if you are interested in a place.

We continue to identify ways that the younger children can benefit from being on a secondary school site, as well as opportunities for secondary school children to assist within the nursery. We think having young children around the secondary school is important and better reflects home life.







27th February - 3rd March  
**Read-aloud-a-thon**  
We're looking for a book to read aloud to the school and all guests!  
Each year we have a competition to see who can read the most books.  
It is a competition of reading books for the year 2023-2024.  
We are looking for a book to read aloud to the school and all guests.  
Any book is fine as long as it is a book. Ages 10-14 are best.

27th February - 3rd March  
**Read-aloud-a-thon**  
We're looking for a book to read aloud to the school and all guests!

Much More Than  
Just A Clock  
HAVE A PEER INSIDE

more



# Reading

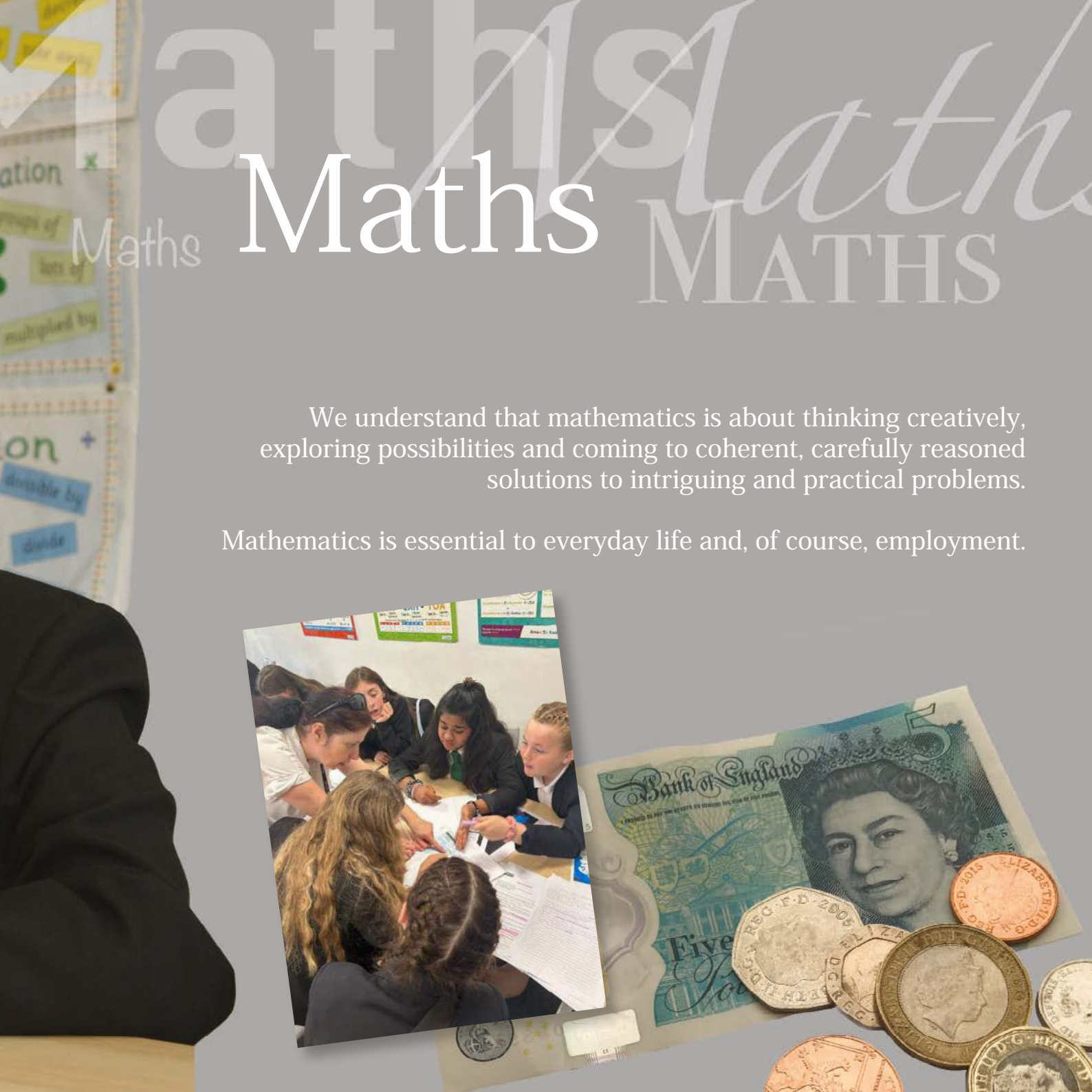
Reading is placed at the heart of school life.

Reading at Park is given status- we know it develops not only literacy, but also cultural capital, a sense of identity, understanding of our world and compassion. Park's Reading Canon is a set of literature all students should read during their time at Park. The texts are challenging and regularly reviewed to ensure they are diverse and include authors, themes and content that explore and celebrate diversity. Some of the texts are read in daily tutor time together, others in English lessons, while most are promoted for independent reading.









# Maths

We understand that mathematics is about thinking creatively, exploring possibilities and coming to coherent, carefully reasoned solutions to intriguing and practical problems.

Mathematics is essential to everyday life and, of course, employment.







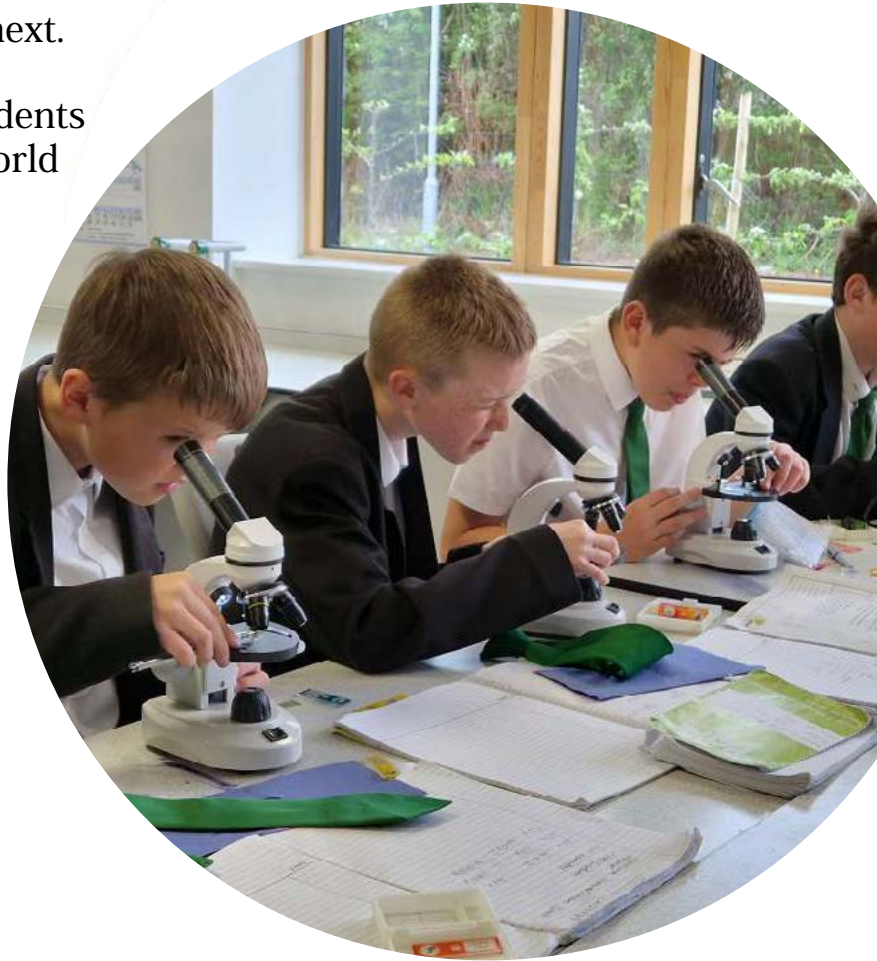
more than

# Science

In science, we believe in using investigations to promote the learning of key concepts.

We are always questioning and always wondering why and what next.

Our science curriculum allows students to think about and question the world around them. We are passionate about exploring and questioning through science.







more than

# Apex Centre

Apex Centre

The Apex Centre is near the Leigh Park Shopping Centre about fifteen minutes walk from Park Community School.

Students can undertake construction qualifications which cover bricklaying, plastering, wall papering and carpentry. It is also home to other groups who work in partnership with us in providing unique opportunities and experiences for our students.



man





more than

# Technology

We believe that design, technology, food, catering and horticulture provide problem solvers of the future. A Park Design and Technologist innovates solutions through theoretical and practical application to develop creative products from conception to conclusion. A learner's problem solving ability is vital in employment and further education as well as working collaboratively in a team.







more than



# Farm

Farm

At our smallholding on a local farm we grow vegetables and rear animals for meat. The vegetables and meat from the farm are used in the school kitchen, not only promoting healthy eating but also allowing students to make the connection between what they eat and where and how it is grown. Younger students are taught horticulture and at Key Stage 4 can take an accredited course.

On the school site we have one pigmy goat and lots of chickens. They give the children the opportunity to learn about animal care. For some students a quiet place and a cuddle is welcome.







# Park Design & Print

In order to give young people real life work experience and education in an authentic working environment, we have created four bases away from the main school site.

Park, Design and Print (PDP) is based in an industrial unit and uses digital printing equipment for school resources as well as a wide range of external and commercial customers.

In addition to printing, PDP also produces a range of promotional items, some designed through the enterprise programme that students undertake, helping to raise funds for their school identified charities.



**PARK  
DESIGN  
& PRINT**



# Art & Art



more th

# Art & Photography

The art and photography department encourages students to express themselves using a variety of media to create works of art of which they are proud. Teachers are passionate, creative experts, students study a range of existing artists and techniques before being inspired to create personal responses which explore their artistic strengths. The department fosters independence and motivates students to expand their knowledge by investigating and creating beyond the classroom. See the world in a different way by becoming an artist.







more th





# Physical Education

Our PE curriculum is focused on developing a personal commitment and genuine passion for maintaining health and well-being. We aim to create an inspirational working environment where we strive to actively engage students in their learning. Participation and achievements are measured, monitored and celebrated.

During Key Stage 3 and 4 core PE the department aims to inspire students to be active in a range of sports and activities by offering routeways to personalised learning. Within examination PE we endeavour to develop further areas of knowledge for sport, fitness, physiology and psychology.

PE at Park offers students ownership of their physical education experience, empowering students to continue practical involvement and maintain their well-being into adult life.



# Quotes from staff, students and visitors

“I love Spanish because of all the teacher support and it inspires me to travel in the future. I find Spanish both fun and vital for my future in building up my character/personality as well as allowing me to work in any Spanish speaking country.”

---

“I love seeing how maths relates to things in the real world like games designers using algebra to create games.”

---

“Maths is understanding how the world works, how money is created and used, how buildings are made.”

---

“Park Community School is a special place. Every student is valued and nurtured and encouraged to be the best they can be. A truly happy caring school where success for all is our goal.”

---

“Around school, at the events and in conversation, students are very proud of what they are doing and recognise it is very important.”

---

“My attraction to computer science was the idea that the world is ever developing technologically and in the future nearly all careers would require some sort of computational logic.”

---

“I feel we are lucky because we have a variety of musical instruments and resources available to us and these are used to make our music lessons fun, enjoyable and exciting.”

---

“I like everything about PE because the teachers are lovely, challenge us and work us hard. I especially enjoy the athletics and running activities and the opportunities to represent the school at different events.”

---

“Park gives students and their families fantastic facilities and opportunities 365 days of the year. What other school can do that?”

---

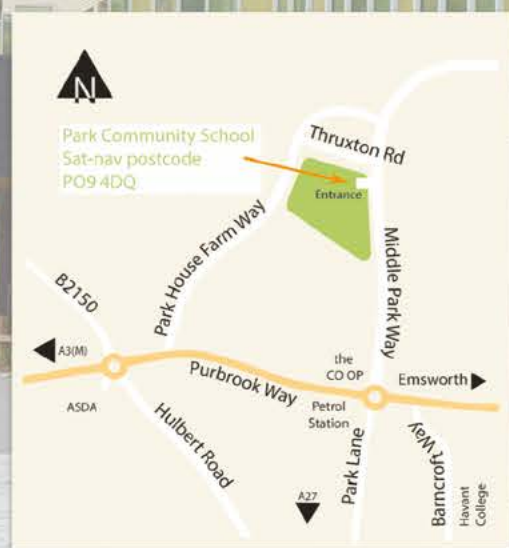












Park Community School, Middle Park Way, Havant, Hampshire PO9 4BU

**T** 023 9248 9800 **E** info@pcs.hants.sch.uk

www.pcs.hants.sch.uk